



IMPROVEMENT PLANNING

FEB 2025

Prof Dr Oliver Groene, Dr Sophie Wang, OptiMedis AG



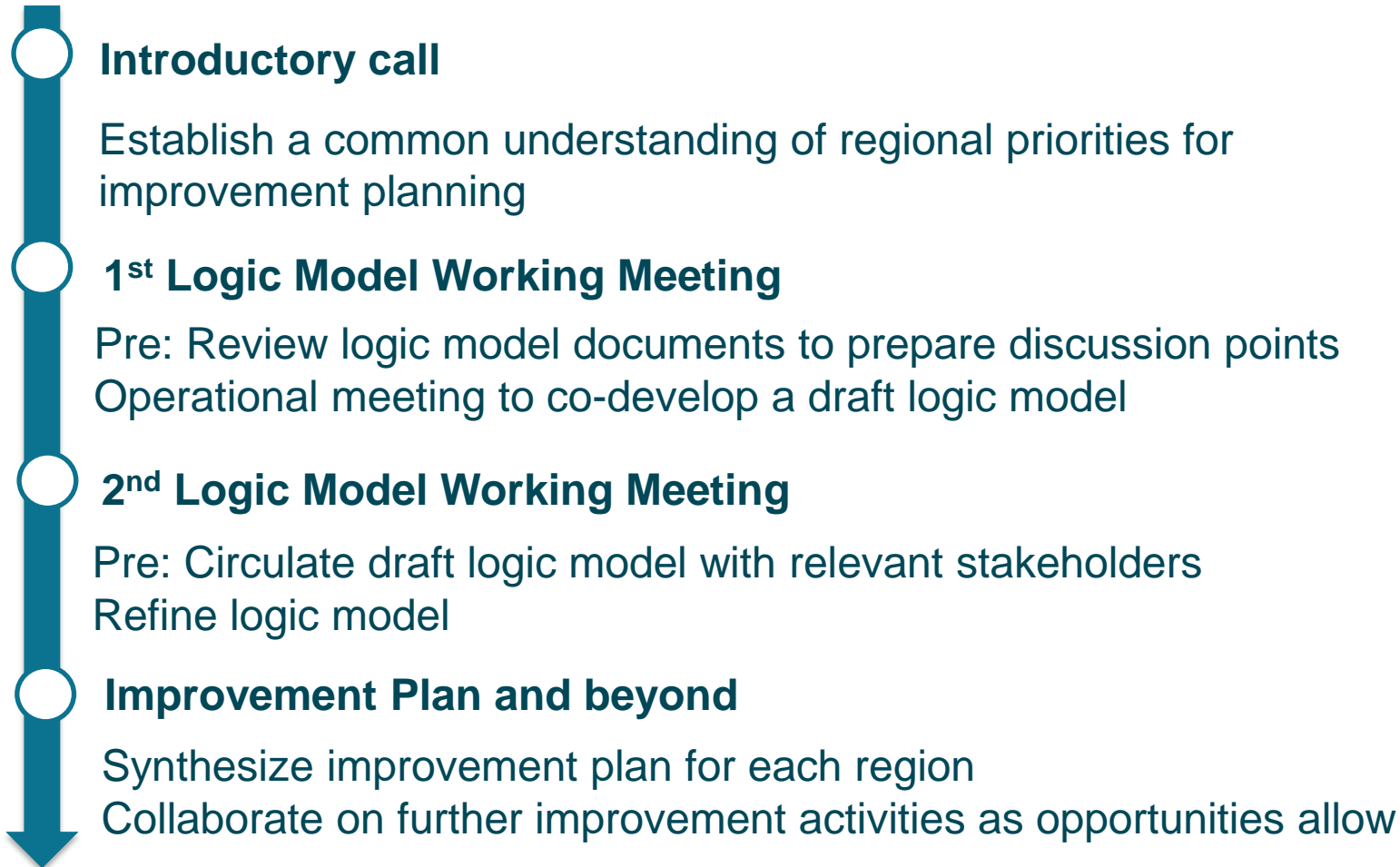
Co-funded by
the Health Programme
of the European Union

The SCIROCCO Exchange project is co-funded
by the Health Programme of the European
Union under Grant Agreement No.: 826676
(Chafea)

FROM MATURITY ASSESSMENT TO IMPROVEMENT

Region (Country)	Maturity assessment	Years initiated	Knowledge Transfer Priorities -Strengths	Knowledge Transfer Priorities - Weaknesses	Improvement goal (s)
Basque (Spain)	3.5	11	Structure and Governance, Digital Infrastructure	Citizen Empowerment, Removal of Inhibitors	Citizen Empowerment
Flanders (Belgium)	1.16	7	Readiness to change	Population approach, Process coordination, Evaluation methods	Process Coordination
Lithuania	2.16	6	NA	Capacity building, Removal of inhibitors	Multimorbidity model
Poland	3.08	4	Digital infrastructure, Citizen empowerment	Digital infrastructure, Citizen empowerment	Citizen Empowerment
Puglia (Italy)	2.08	17	(disaggregated)	(disaggregated)	Funding
Scotland	2.33	5	Readiness to change Innovation management Citizen empowerment	Digital infrastructure Population management Citizen empowerment	Digital Infrastructure, Population Approach, Citizen Engagement
Slovakia	0.75	7	NA	Structure and governance, Population approach, Evaluation methods, Capacity-building, Breadth of ambition	Capacity Building
Slovenia	1.00	4	Digital infrastructure, Process coordination	Innovation Management	Long term care
Werra Meißner (Germany)	1.33	2	Citizen empowerment, Process coordination	Digital infrastructure, Population approach	Digital Infrastructure, Process Coordination

Process for Improvement Planning



What is a Logic Model?

What is a logic model?

Planned Work



De Silva, Mary J., et al. "Theory of change: a theory-driven approach to enhance the Medical Research Council's framework for complex interventions." *Trials* 15.1 (2014): 267.

What is a logic model?

Planned Work

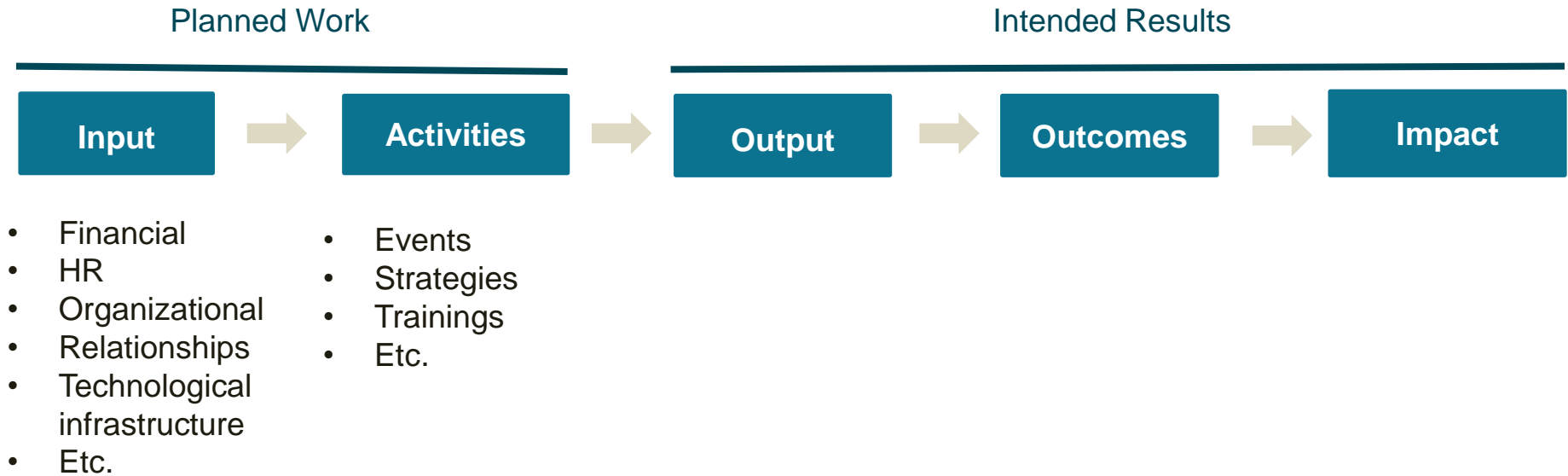


- Financial
- HR
- Organizational
- Relationships
- Technological infrastructure
- Etc.

- Events
- Strategies
- Trainings
- Etc.

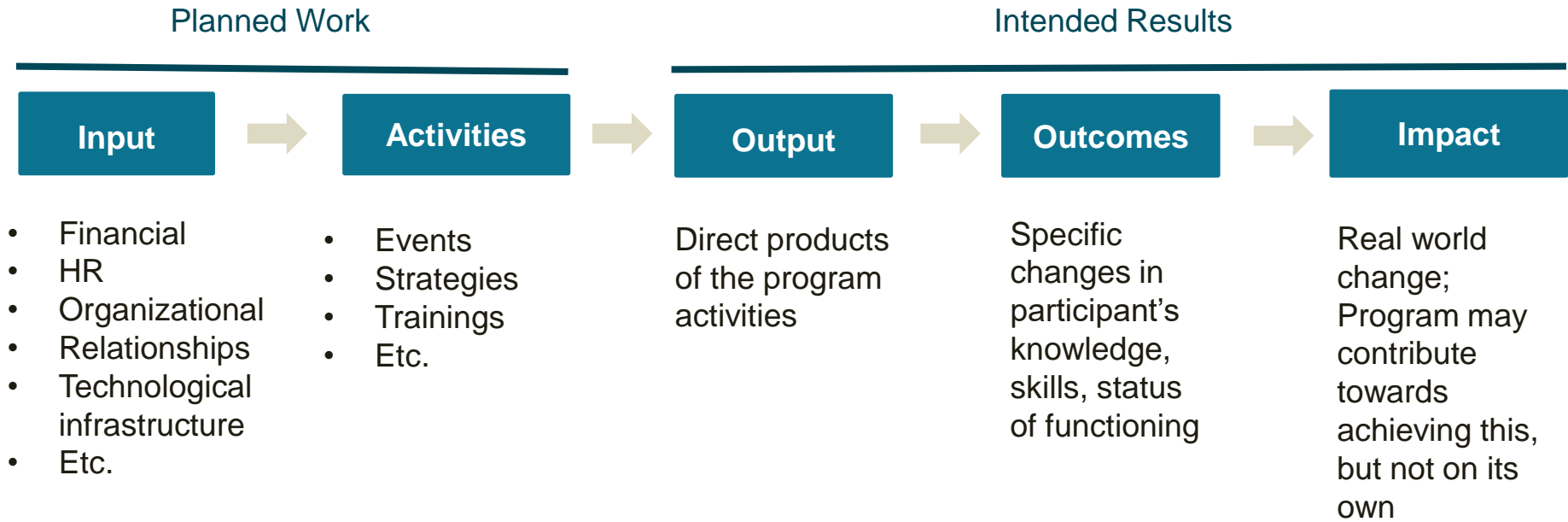
De Silva, Mary J., et al. "Theory of change: a theory-driven approach to enhance the Medical Research Council's framework for complex interventions." *Trials* 15.1 (2014): 267.

What is a logic model?



De Silva, Mary J., et al. "Theory of change: a theory-driven approach to enhance the Medical Research Council's framework for complex interventions." *Trials* 15.1 (2014): 267.

What is a logic model?



De Silva, Mary J., et al. "Theory of change: a theory-driven approach to enhance the Medical Research Council's framework for complex interventions." *Trials* 15.1 (2014): 267.

Logic Model Example 1 – Let's bake a cake!

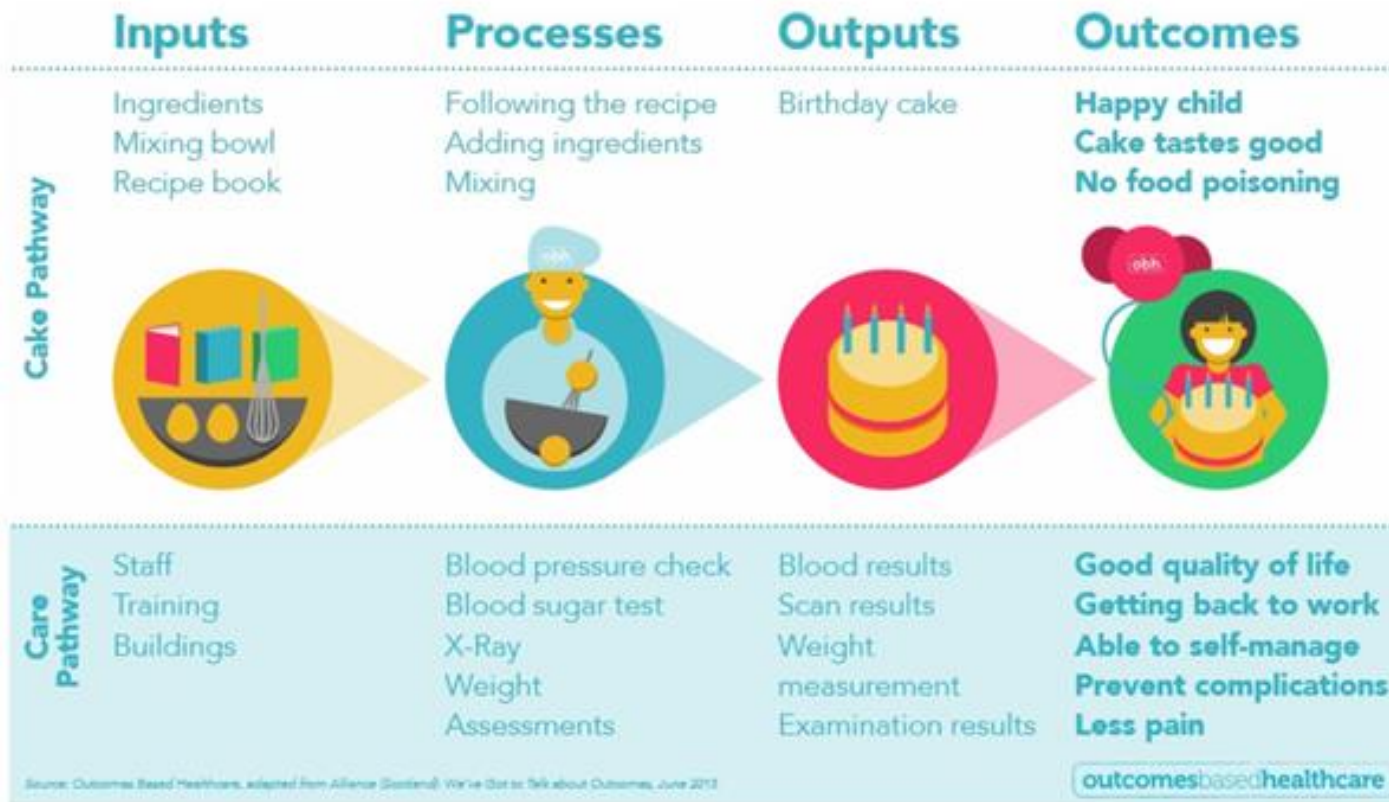
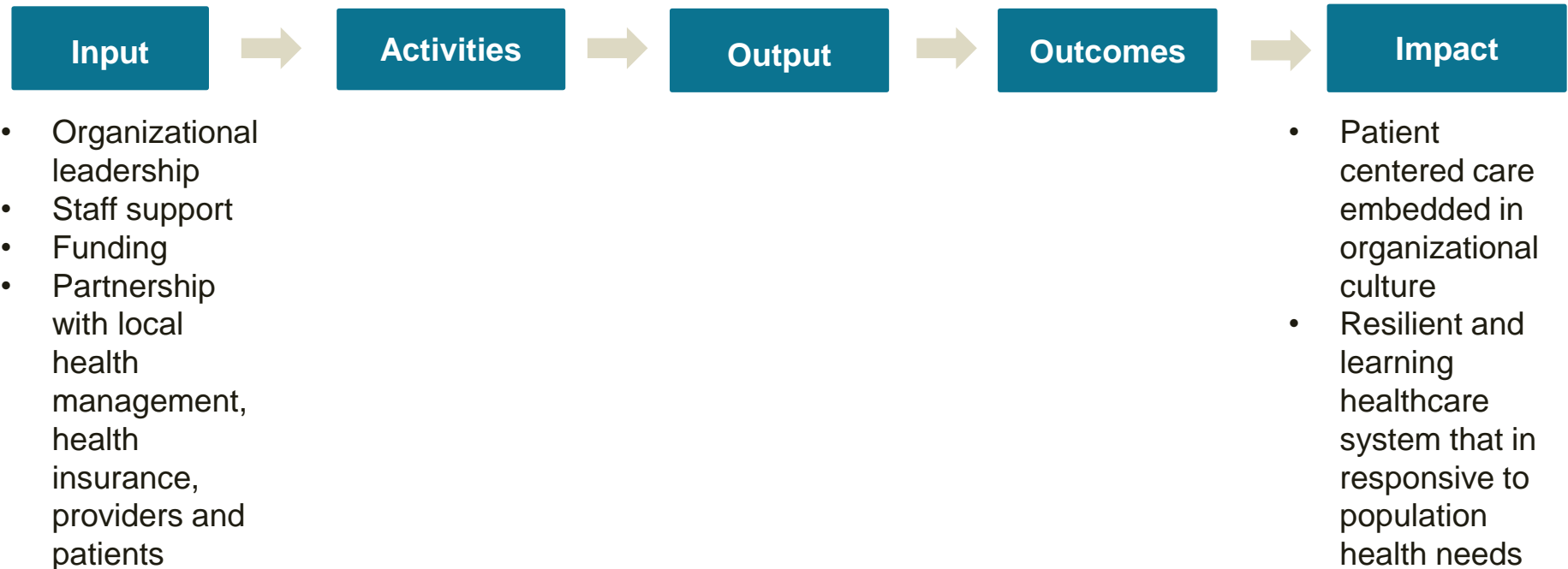


Figure 3 - Types of quality measures across care pathways (Source - OBH, Adapted from Alliance (Scotland): We've Got to Talk about Outcomes, June 2013).

De Silva, Mary J., et al. "Theory of change: a theory-driven approach to enhance the Medical Research Council's framework for complex interventions." *Trials* 15.1 (2014): 267.

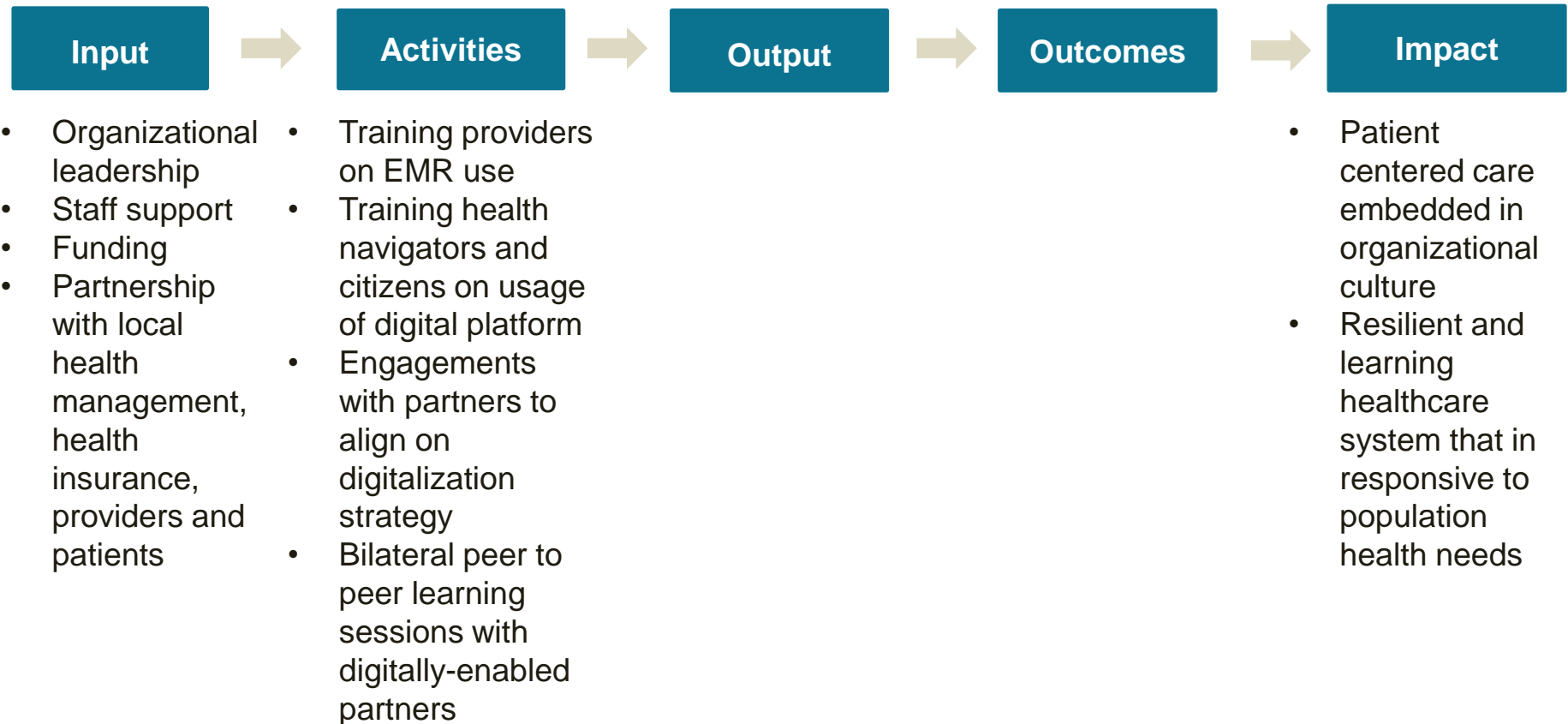
Logic Model Example – WMK (Germany)

Focus Area: Digital Infrastructure



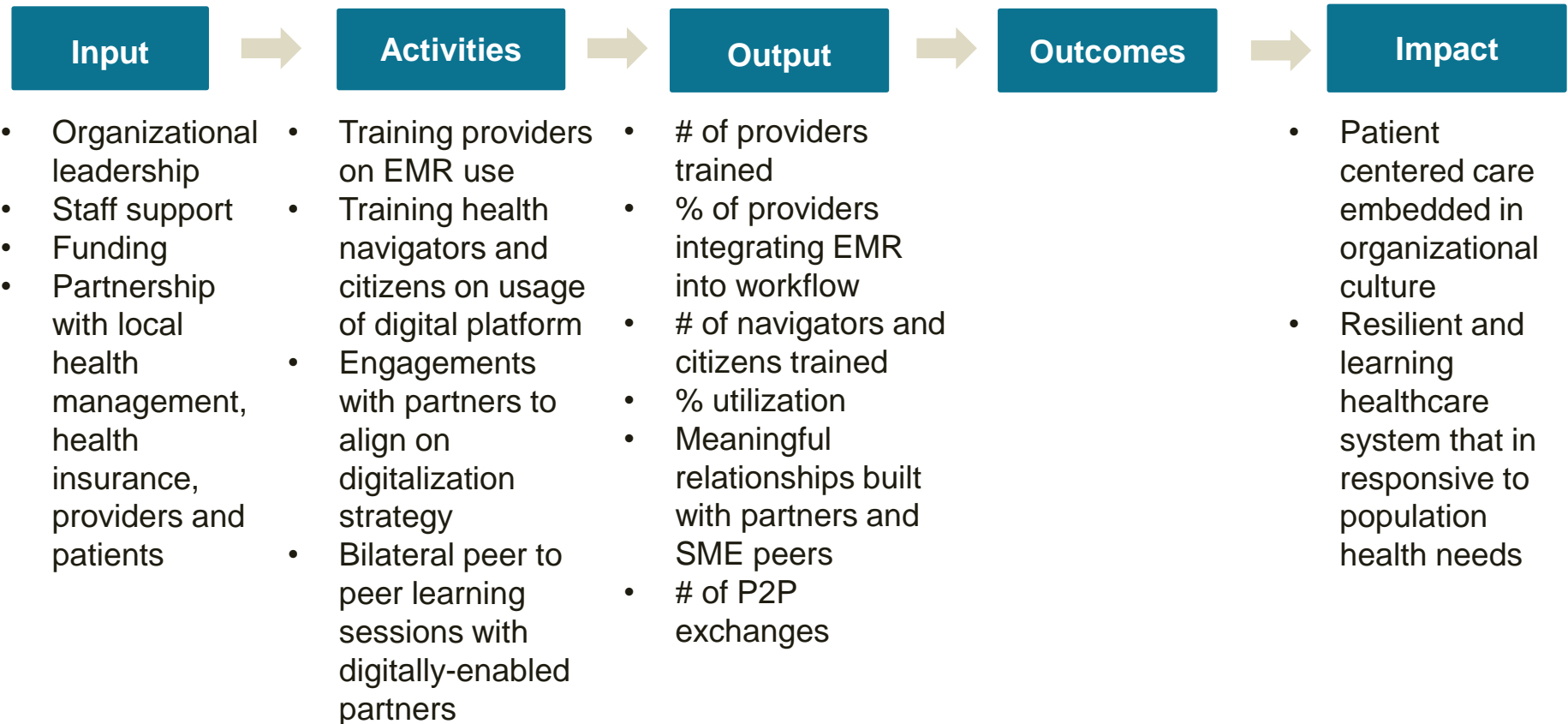
Logic Model Example – WMK (Germany)

Focus Area: Digital Infrastructure



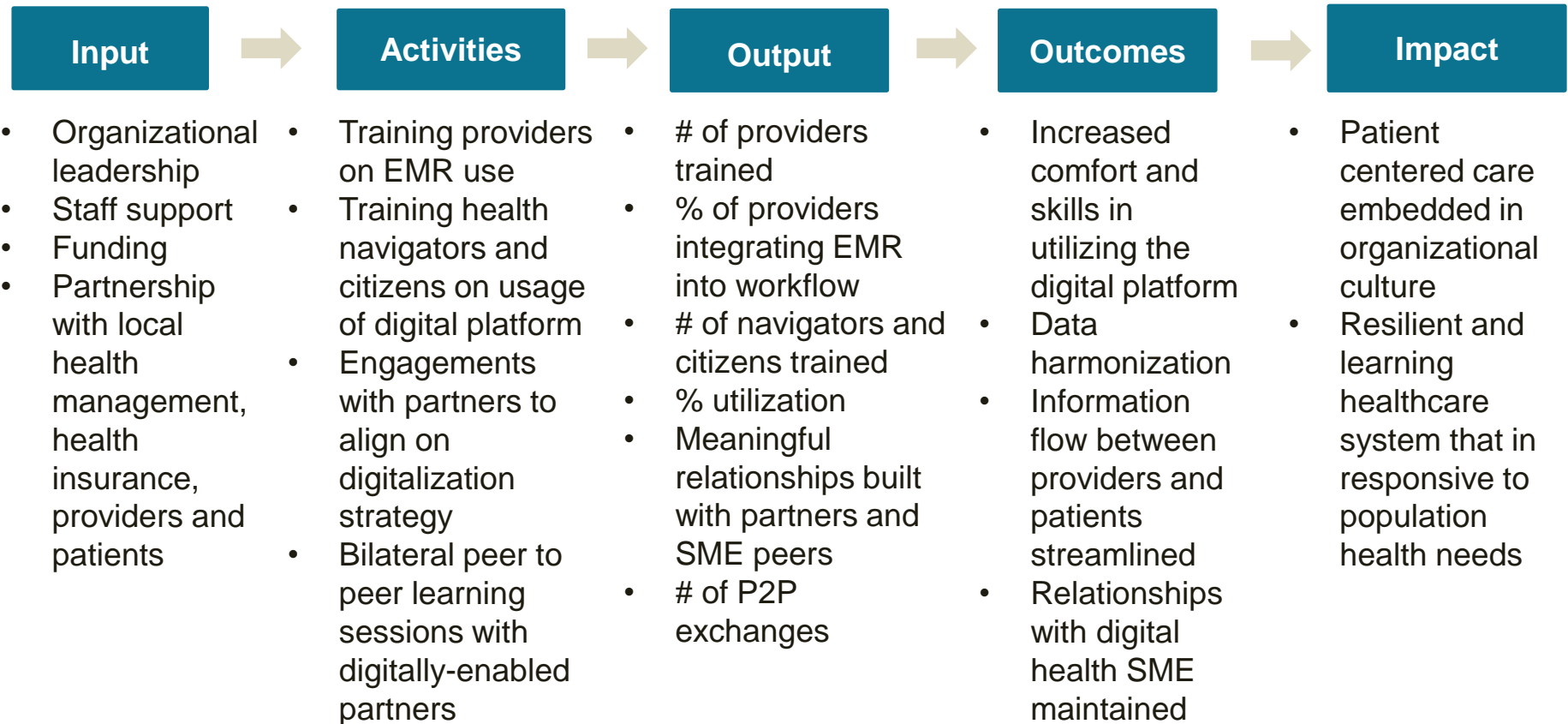
Logic Model Example – WMK (Germany)

Focus Area: Digital Infrastructure



Logic Model Example – WMK (Germany)

Focus Area: Digital Infrastructure



Why Logic Models?

Why Logic Models?

- To establish a shared understanding of what the program is, where it's headed and how progress can be measured
- Improve stakeholder engagement
- Articulate and test the logic behind your program/project/initiative
- Scirocco established the baseline to initiate the improvement process, nurtured and target discussions and established the improvement priority

